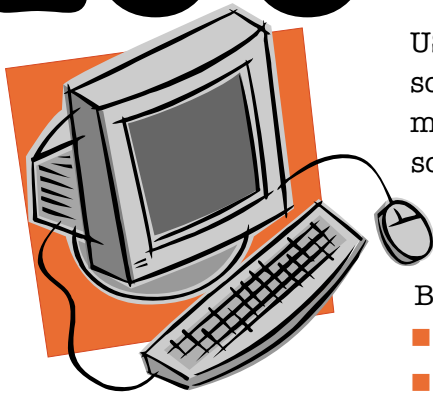


Enable ENERGY STAR[®] “sleep” mode for 100 or more computer monitors at once!



US Department of Energy recently developed “**EZ STAR**”, a free software tool that makes it easy to reduce energy use by computer monitors throughout your organization. Next week (April 23 – 26) the software’s developer, David Ensign, is in town from the East Coast to demonstrate the new software. Organizations that have seen this demonstration have been surprised at how easy and powerful it is.

By reducing computer energy use your organization:

- takes a no-cost action before Summer that reduces operating costs;
- reduces air conditioning requirements in tenant spaces;
- demonstrates a conservation commitment throughout the organization;
- earns incentive \$\$ from the State-funded **Office Equipment Efficiency Program**.

EZ STAR will:

- Use the ENERGY STAR features that already exist in your computers;
- Activate only those ENERGY STAR features that affect the workstation’s monitor.
- Provide a simple mechanism for activating many workstations through the use of a single command inserted into your network’s login script.
- Work with Windows-based systems only.
- Not work for workstations using Windows NT 4.x (but Windows 2000 is OK)

For a software demonstration at your site, please call **ENERGY SOLUTIONS** at (510) 482-4420 ext#223.

To attend the open demonstrations in San Francisco or Oakland, please contact us:

Oakland:

Wednesday, April 25, at 3:30 pm
Oakland Federal Building
1301 Clay Street, NORTH Tower
2nd Floor, Conference Room E
Call BOMA-East Bay at
(510) 893-8780

San Francisco:

Thursday, April 26, at 10 am
San Francisco Federal Building
450 Golden Gate Avenue
California Room
Call ENERGY SOLUTIONS at
(510) 482-4420 #210

Space is limited, so please call for a reservation.

E N E R G Y  S O L U T I O N S

EZ STAR Summary

EZ STAR simply “turns on” the ENERGY STAR “sleep” settings for computer monitors. Although virtually all monitors (except those with Windows NT) have the ability to go to sleep when inactive, nearly half of an organization’s computers typically have the settings turned off. EZ STAR tells you how many machines are already “enabled” for sleep, and allows a central command to turn on sleep settings for the rest of your users. For a preview and a free download, see www.microtech.doe.gov/energystar/.